



LOS ANGELES
CITY PLANNING

Environmental Justice for Los Angeles

Working Group Meeting # 2

December 6, 2023

LOS ANGELES
CITY PLANNING

Agenda

- **Introductions**
- **Working Group Meeting #1 Summary | *10 mins***
- **Updates | *10 mins***
- **Q & A | *5 mins***
- **Air Quality | *25 mins***
- **Break | *5 mins***
- **Open Space | *25 mins***
- **Health | *25 mins***
- **Closing and Next Steps**

Introductions - Meet the Team

Fabiola Inzunza - EJ Policy

City Planner

Melissa Granados - EJ Policy

Planning Assistant

Jonathan Ayon - EJ Outreach & Engagement

City Planner

Jesse Ramos - EJ Outreach & Engagement

City Planning Associate

Gabriela Juarez - Climate Equity

City Planner

Marie Cobian

Senior City Planner

Jenna Monterrosa

Principal City Planner

Myranda Arreola - Climate Equity

Student Professional Worker

Introductions - Working Group Members

1

Rename yourself on Zoom

first name, last name, organization, preferred pronouns



2

Answer the following Zoom poll questions:

Has your organization shared the EJ Community Survey with community members?

Has your organization shared any other information about this program with colleagues or community members?

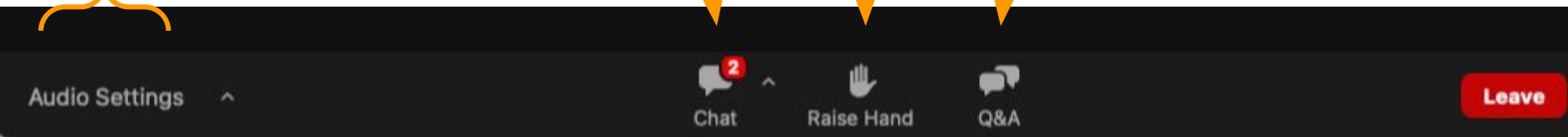
Zoom Control Panel

Sound source

Tech Support and Information
from City Staff

Ask a Question for
Q&A

Raise hand



Staff can also be reached at planning.envjustice@lacity.org

Working Group Meeting #1 Summary

The background of the slide features a photograph of a modern, multi-story building with large windows and a flat roof. In the foreground, there is a landscaped area with several wooden benches, a paved walkway, and some greenery. In the distance, a city skyline with various skyscrapers is visible under a clear sky. The entire image is overlaid with a semi-transparent blue filter.

Summary

Environmental Justice Policy Program

- General Plan Updates to the Air Quality, Open Space and Health Element
- Outreach and Engagement Strategy
- Climate Vulnerability Assessment



Summary

Policy Concepts Activity (S.O.A.R)

- Vision for healthy communities
- Support for various existing City efforts
- Implementation challenges
- City/Agency coordination
- Remediation standards

Meaningful Involvement Discussion

- Allow space for organic conversations
- Ongoing engagement
- Allow communities to lead
- Compensate for time
- Accessible locations/materials
- Manage expectations



Working Group Summary and Materials:

<https://planning.lacity.org/plans-policies/community-plan-update/environmental-justice/environmental-justice-policy-program-0>

Summary

Participating Organizations

Black Women for Wellness	Pacoima Beautiful
Coalition for Clean Air	Physicians for Social Responsibility
Communities for a Better Environment	Rising Communities
Community Coalition	Strategic Actions for a Just Economy
Esperanza Community Housing Corporation	T.R.U.S.T South LA
First 5 LA	Tree People
Los Angeles Neighborhood Initiative	Trust for Public Land
Los Angeles Neighborhood Land Trust	Watts Labor Community Action Committee/ Greater Watts Development Corporation

Working Group Purpose

- Review existing General Plan goals, objectives, policies, and programs
- Provide guidance and recommendations for additional and/or amended goals, objectives, policies, and programs
- Articulate the needs and concerns of the of the communities you represent and/or serve
- Advise and promote public outreach and engagement efforts
- Review draft documents



Working Group Roles and Responsibilities

- **Attendance** at all Working Group meetings by no more than 1 organizational representative (or alternate)
- **Listen** actively to the ideas and opinions expressed by all Working Group members, project staff and team members, and all members of the community
- **Engage** in constructive discussion and be open to alternative solutions and points of view
- **Discuss** all ideas respectfully, acknowledging the diversity of viewpoints in the room and understanding that full agreement is not always the goal
- **Elevate** the view of the communities you represent and/or serve, acknowledging and drawing on the diversity of opinions and outlooks represented
- **Be present** and engaged during all discussions

Timeline

WE ARE HERE



Year 1

Research and Launch

- Background and Technical Research



Year 1

Initial Outreach

- Convene Working Group
- Initiate Community Outreach and Engagement



Year 1

Consult

- Convene City Task Force
- Meetings with Working Group



Year 1

Draft Plans

- Release Draft Plans for Public Review
- Collect Feedback



Year 2

Refine and Revise Plans

- Continue Community Engagement
- Collaboration with Task Force and Working Group



TBD

Open House and Public Hearing

- Share Revised Plans
- Hold Open House and Public Hearing



TBD

Adopt

- Adoption Process Starts with City Planning Commission

Working Group Schedule

Upcoming Meetings and Topics

- **Working Group Meeting #1 - October 18, 2023**
Topic: Vision, Policy Concepts and Meaningful Involvement
- **Working Group Meeting #2 - December 6, 2023**
Topic: Goals and Policies
- **Working Group Meeting #3 - February 7, 2024**
Topic: Implementation Programs
- **Working Group Meeting #4 - April 10, 2024**
Topic: Refinements

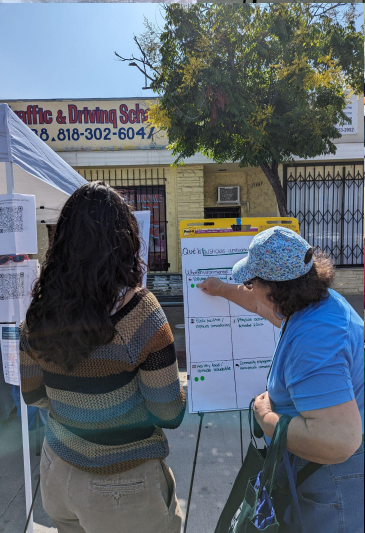


Updates



Outreach and Engagement

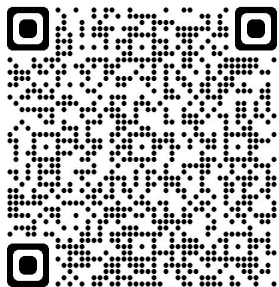
Past and Upcoming Events	
CicLAMini - North Hollywood Sunday, September 7, 2023	Office Hours (Virtual) Tuesday & Wednesday, October 24-26, 2023
Move Your Way - Pacoima Saturday, September 23, 2023	Northgate Market - South LA Thursday, November 16, 2023
Neighborhood Council Sustainability Alliance Sunday, October 8, 2023	CicLAvia - South LA Sunday, December 3, 2023
PlanCheck Neighborhood Council Alliance Saturday, October 14, 2023	Mariachi Plaza Farmers Market - Boyle Heights Sunday, December 10, 2023
South Los Angeles Neighborhood Council Alliance Thursday, October 19, 2023	Health Commission Monday, December 11, 2023
Taste of Soul - South Los Angeles Saturday, October 21, 2023	Office Hours - South LA Wednesday & Thursday, December 13-14, 2023
P-22 Day - Griffith Park Sunday, October 22, 2023	Office Hours (Virtual) Saturday, December 16, 2023
Dia De Los Muertos Resource Fair - North East LA Tuesday, October 24, 2023	Ongoing (Virtual) Office Hours Every 1st and 3rd Wednesday of the month 2024 from 10am-2pm



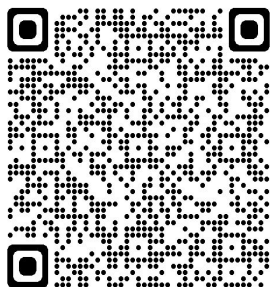
Outreach and Engagement

Community Survey #1 - Closing Soon

¡Comparta!



Share!



Ongoing Efforts

- Establishing additional partnerships
 - Los Angeles Unified School District
 - Los Angeles Public Library
 - Youth Organizations
- Identifying funding opportunities

Voices from the Frontlines Project

Applied Planning Research Project UCLA Luskin School of Public Affairs, Department of Urban Planning

- Interviews
- Storymap and Report



Miriam Bar-Zemer, 2024 MURP Candidate
Lucy Briggs, 2024 MURP Candidate

Interview Topics

- History and Connection to Neighborhood
- Environment and Health
- Community Assets
- Organizing and Future Vision
- Role of Planning

planning.envjustice@lacity.org

Climate Equity

Citywide Coordination

- Climate Vulnerability Assessment (CVA)
- Local Hazard Mitigation Plan (LHMP)
- Heat Action & Resilience Plan (HARP)
- Environmental Justice Policy Alignment



Climate Vulnerability Assessment

- Climate impacts with social vulnerability analysis
- Community Partners Program
- One year work program in collaboration with City Partners - CEMO and EMD
- Final report with recommendations for potential mitigations and next steps

Q & A



General Plan Overview



Environmental Justice in the General Plan



FRAMEWORK



HOUSING



SAFETY



HEALTH



MOBILITY



CONSERVATION



AIR QUALITY



NOISE



INFRASTRUCTURE
SYSTEMS



PUBLIC
FACILITIES &
SERVICES



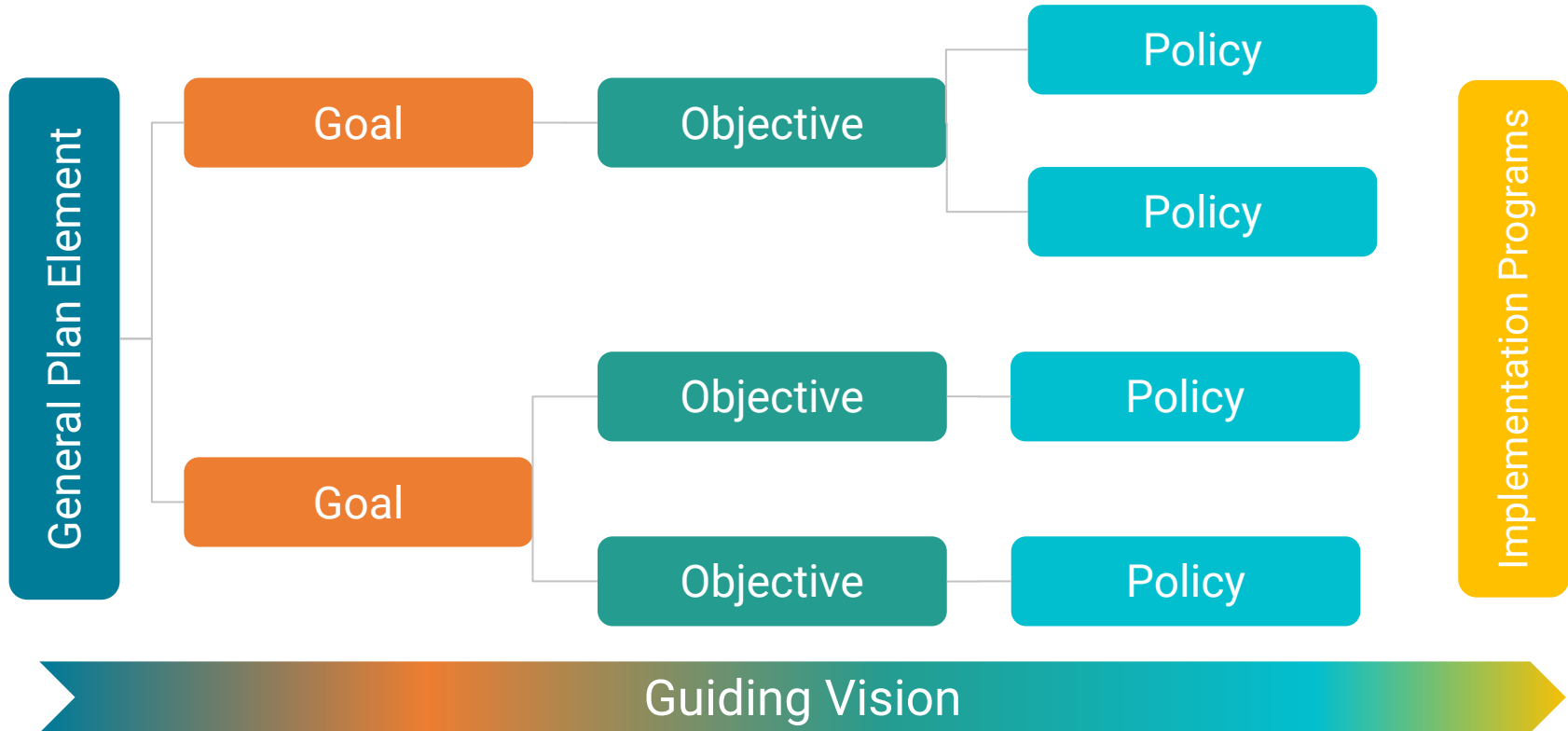
OPEN SPACE



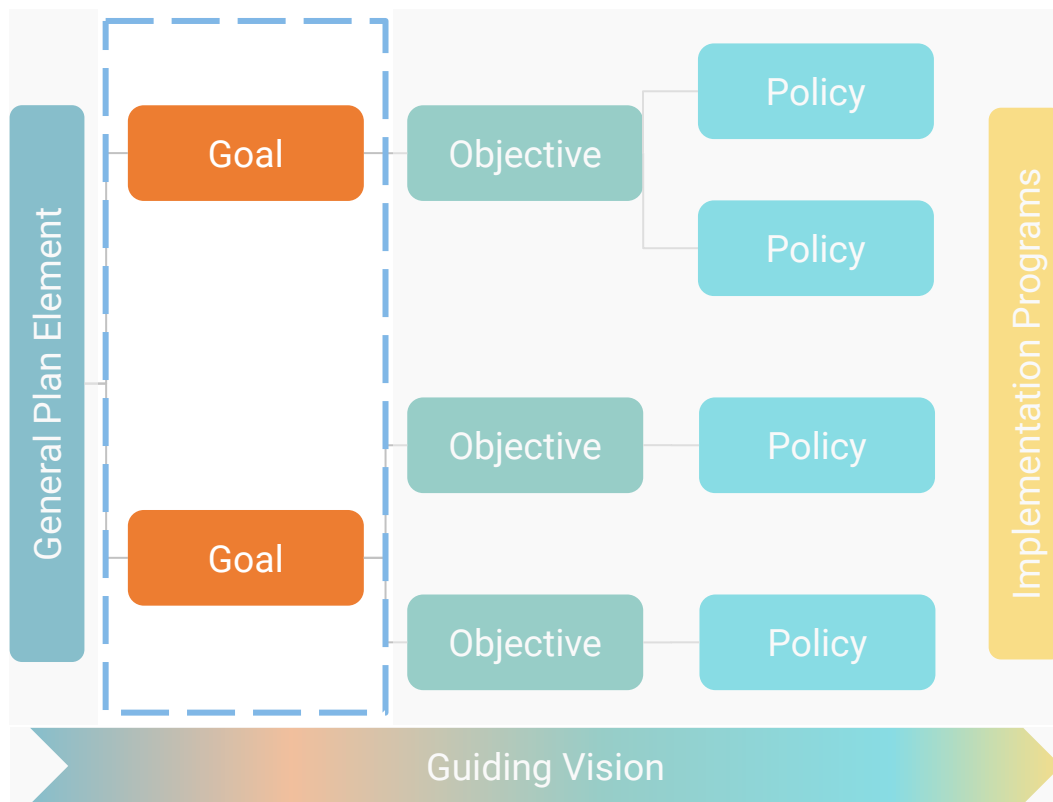
LAND USE
35 Community Plans

EJ?

Traditional Structure of General Plan Elements



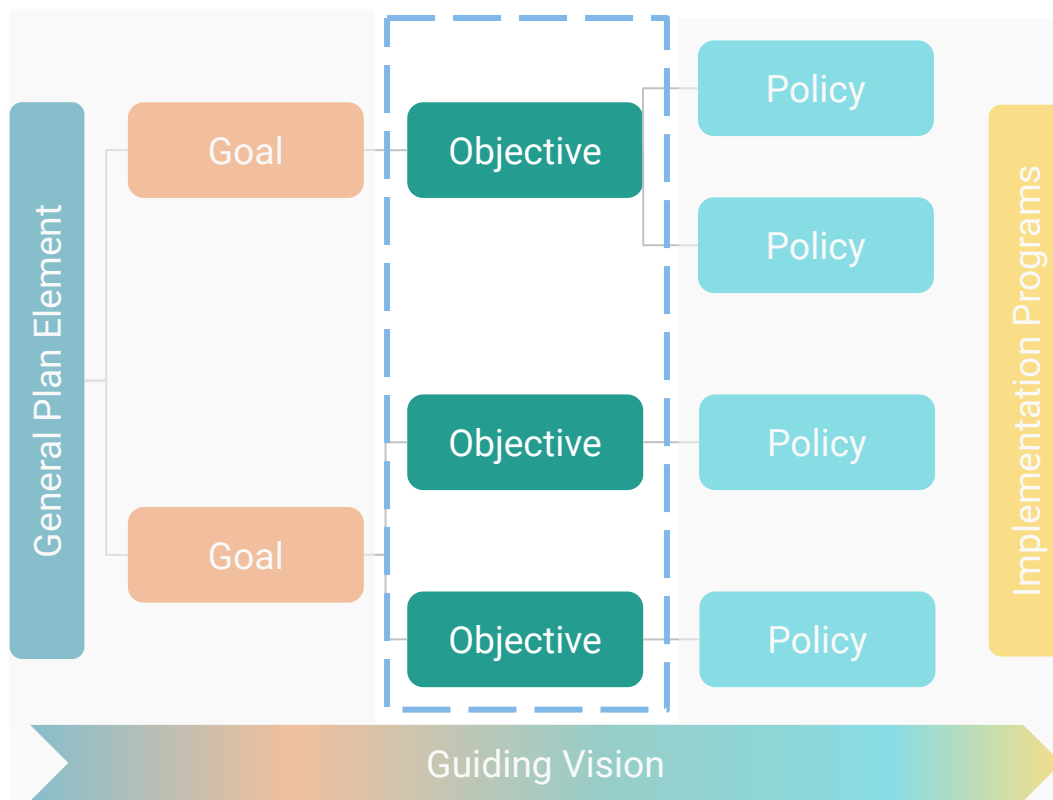
Traditional Structure of General Plan Elements



Goals are broad statements that describe a future condition or “end state”. Goals are aspirational and outcome oriented.

An Environment Where Life Thrives
(Health Element, Goal 5)

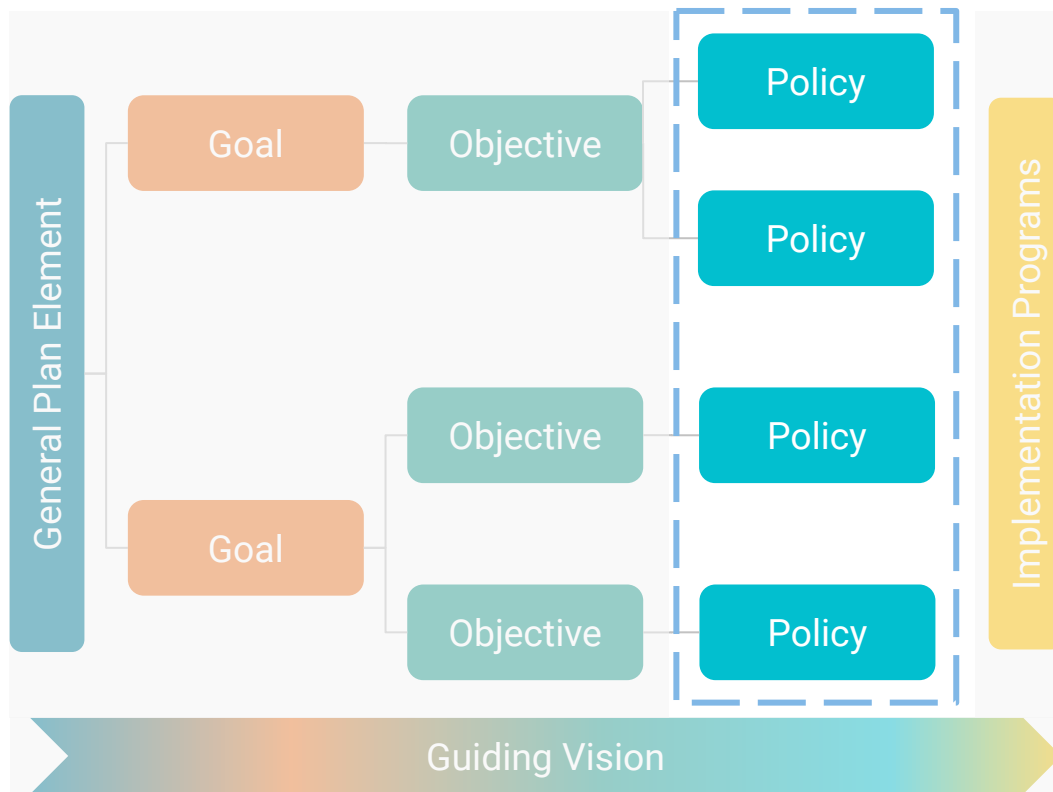
Traditional Structure of General Plan Elements



Objectives are aspirational measures of goal attainment.

Reduce the disparity in communities that are impacted by a high Pollution Exposure Score (Health Atlas Map 111) so that every zip code has a score less than 1.7.
(Health Element, Goal 5)

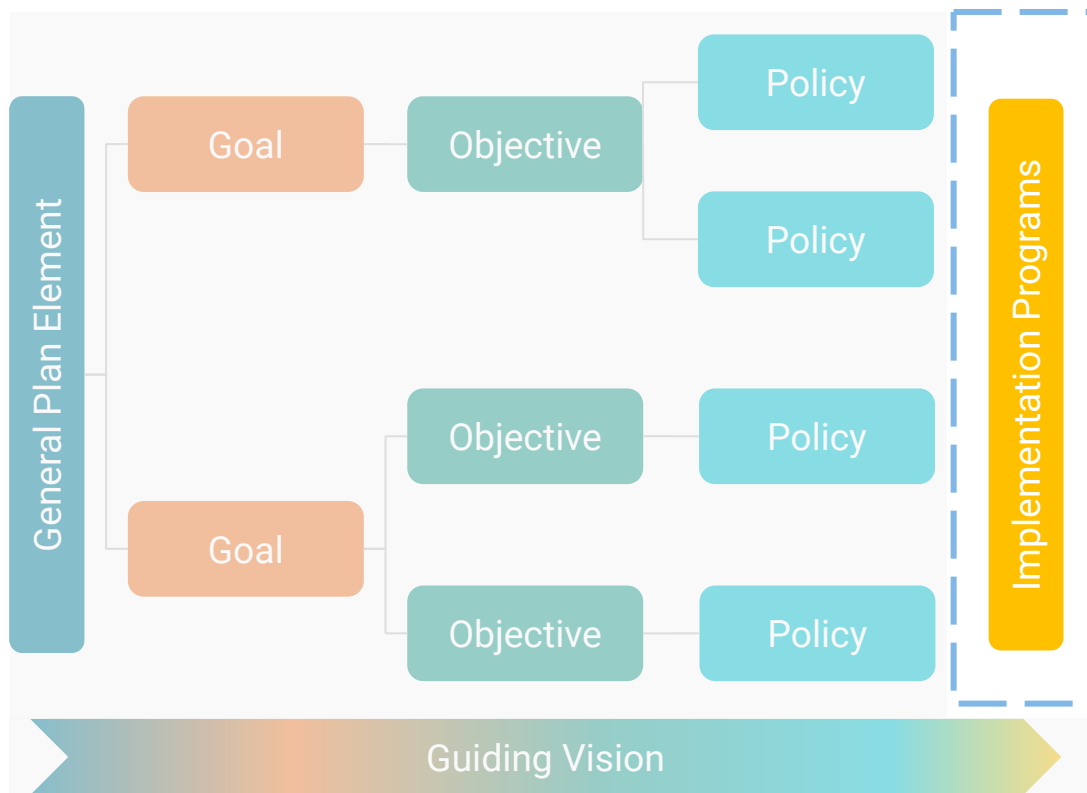
Traditional Structure of General Plan Elements



Policies are clear statements that guide a specific course of action to achieve a desired goal.

Reduce negative health impacts for people who live and work in close proximity to industrial uses and freeways through health promoting land uses and design solutions.
(Health Element, Goal 5, Policy 5.2)

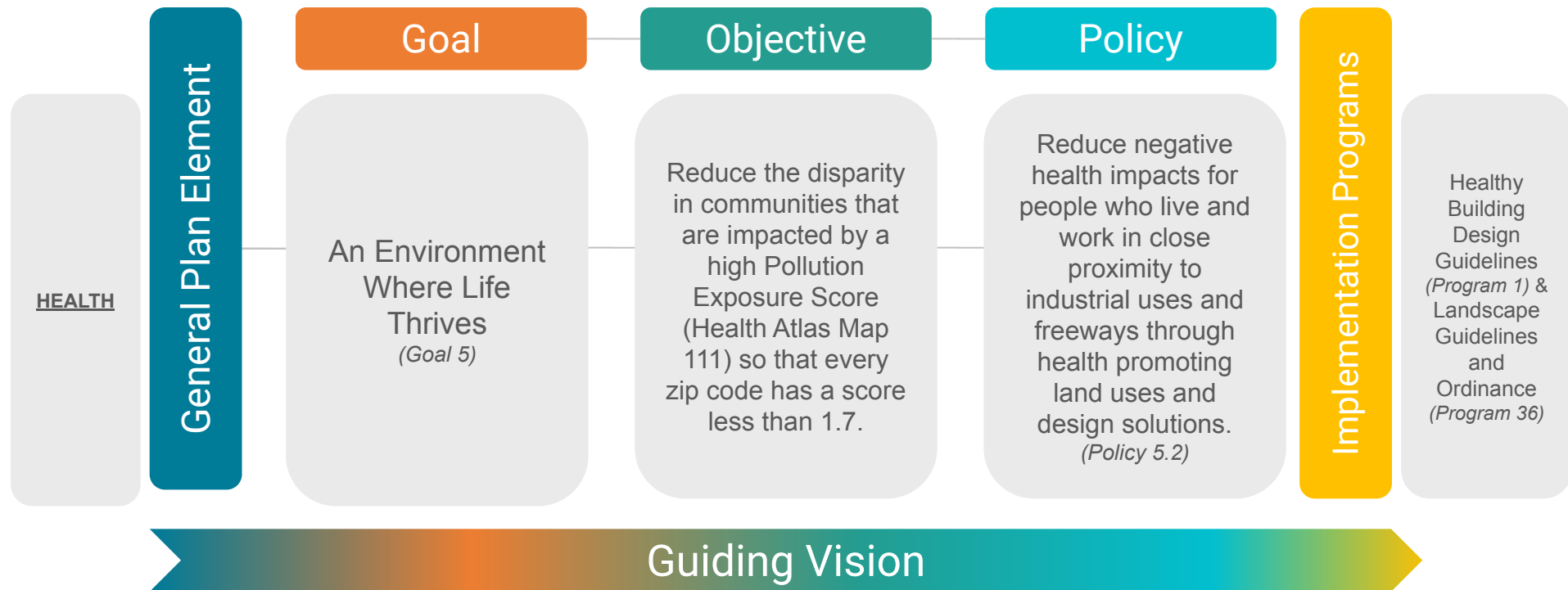
Traditional Structure of General Plan Elements



Programs are a proposed action, procedure, program, or technique that may be utilized to further General Plan goals, objectives, and policies. Decisions to implement specific programs are discretionary and governed by program cost, available funding, staffing, feasibility and similar considerations.

Healthy Building Design Guidelines (Program 1) & Landscape Guidelines and Ordinance (Program 36)

Example



Goal	Objective	Policy Topic	Policy
Los Angeles, a Leader in Health and Equity	<ul style="list-style-type: none"> Increase the life expectancy citywide by 5% and reduce the disparity between the City's highest life expectancy Public Use Microdata Area (PUMA) and lowest life expectancy PUMA by at least 50%. (Health Atlas Map 37) Reduce the coronary heart disease (CHD) mortality rate citywide by 20% and reduce the disparity between City Council Districts with the highest and lowest CHD mortality rates by at least 50%. (Health Atlas Map 38) Reduce the diabetes mortality rate citywide by 20% and reduce the disparity between the City Council Districts with the highest and lowest diabetes mortality rates by at least 50%. (Health Atlas Map 41) Reduce the prevalence of childhood obesity citywide by 20% and reduce the disparity between Community Plan Areas with the highest and lowest prevalence by 50%. 	1.1 Leadership	Position Los Angeles as a regional leader by collaborating across departments, agencies, sectors, and jurisdictions to incorporate health, equity, and sustainability considerations into policies, programs, and procedures.
		1.2 Collaboration	Develop intentional strategic partnerships with public, private, and nonprofit entities to improve health outcomes by leveraging capacity, resources, and programs around mutually beneficial initiatives that promote health, equity, and sustainability.
		1.3 Prevention	Promote healthy communities by focusing on prevention, interventions, and by addressing the root causes of health disparities and inequities in Los Angeles.
		1.4 Education	Work with public, private, and nonprofit partners to educate the public about health and wellness by supporting information and interventions that are readily available, culturally relevant, and linguistically accessible.
		1.5 Plan for Health	Improve Angelenos' health and well-being by incorporating a health perspective into land use, design, policy, and zoning decisions through existing tools, practices, and programs.
		1.6 Poverty and Health	Reduce the debilitating impact that poverty has on individual, familial, and community health and well-being by promoting cross-cutting efforts and partnerships to increase access to income, safe, healthy, and stable affordable housing options, and attainable opportunities for social mobility.
		1.7 Displacement and Health	Reduce the harmful health impacts of displacement on individuals, families, and communities by pursuing strategies to create opportunities for existing residents to benefit from local revitalization efforts by: creating local employment and economic opportunities for low-income residents and local small businesses; expanding and preserving existing housing opportunities available to low-income residents; preserving cultural and social resources; and creating and implementing tools to evaluate and mitigate the potential displacement caused by large-scale investment and development.
2.1 Access to goods and services	Enhance opportunities for improved health and well-being for all Angelenos by increasing the availability of and access to affordable goods and services that promote health and healthy environments, with a priority on low-income neighborhoods.		

General Plan Inventory


Goal	Objective	Policy
Good air quality and mobility in an environment of continued population growth and healthy economic structure.	1.1 It is the objective of the City of Los Angeles to reduce air pollutants consistent with the Regional Air Quality Management Plan [AQMP], increase traffic mobility, and sustain economic growth citywide.	1.1.1 Encourage demonstration projects which involve creative and innovative uses of market incentive mechanisms to achieve air quality objectives
	1.2 It is the objective of the City of Los Angeles to demonstrate the City's commitment to air quality improvement through the development and revision of the City's General Plan Elements of appropriateness, and to work cooperatively with federal, state, regional, and other local jurisdictions in attaining clean air.	1.2.1 Implement the Air Quality Element policies set forth in this Chapter through adoption of the Clean Air Program which shall be amended so Council sees necessary without General Plan Amendment. 1.2.2 Pursue the City's air quality objectives in cooperation with regional and other local jurisdictions 1.2.3 Monitor and assess the progress of the City's air quality improvement programs.
	1.3 It is the objective of the City of Los Angeles to reduce particulate air pollutants emanating from unpaved areas, parking lots, and construction sites.	1.3.1 Minimize particulate emissions from construction sites. 1.3.2 Minimize particulate emissions from unpaved roads and parking lots which are associated with vehicular traffic.

Goal	Objective	Policy
<ul style="list-style-type: none"> To insure the preservation and conservation of sufficient open space to serve the recreational, environmental, health and safety needs of the City. To conserve unique natural features, scenic areas, cultural and appropriate historical monuments for the benefit and enjoyment of the public. 	<ul style="list-style-type: none"> To encourage private persons and all levels of government to assume a logical role in the regulation, funding, planning, development and operation of a coordinated open space system for the State, County, region and City. To establish guidelines for utilizing existing open space for the maximum benefit of the citizens of Los Angeles consistent with the rights of persons owning such open space. 	Ecologically important areas are generally considered as open space and shall be so designated. The following shall apply: a. To the extent feasible, ecologically important areas should be kept in a natural state b. In the event a project is proposed within an ecologically important area, an environmental-impact report shall be prepared. c. The construction of roads through ecologically important areas should be closely controlled in order to protect these areas.
		Flood endangered areas should be set aside for appropriate open space uses. Alteration of drainage patterns shall be minimized in the development of any land in mountain areas Stream and wash areas should be conserved except where improvements are necessary to protect life and property Cultural and historical monuments located on Open Space Lands shall be preserved. The amount of earth moved in grading operations within desirable open space areas should be limited and closely controlled. Aesthetic consideration should be incorporated into the City's approval of grading plans in these areas. Multiple use of open space is considered especially important in proposed or existing areas of high density and/or intensity of development. The primary function of open space in existing or proposed areas of high density and/or intensity of development shall be to provide psychological relief from urban development.

- Over 1,100 policies
- Environmental Justice topics embedded throughout
- Each Element is available in PDF format:

<https://planning.lacity.org/plans-policies/general-plan-overview>

Air Quality



Background

Source Categories

- Mobile Sources
- Stationary Sources
- Areawide Sources
- Natural Sources

Air Pollutants

- Ozone
 - Carbon Monoxide
 - Nitrogen Dioxide
 - Sulfur Dioxide
 - Particulate Matter (2.5 and 10)
 - Lead
 - Sulfates
 - Hydrogen Sulfide
- + 200 toxic air pollutants**



AIR QUALITY ELEMENT



Air Quality Element

- Adopted in 1979, last updated in 1992
- Focuses on the relationship between land use and air quality
- Intersection with [Mobility Element](#) and [Health Element](#)

Air Quality in the Health Element

- Air Pollution and Respiratory Health
- Proximity to Industrial Uses and Freeways
- Smoke-free Environments
- Exposure to Noxious Activities
- Land Use Patterns and Reduction of GHG Emissions



Air Quality Element - Existing Goals

Health Element Goal 5:
An Environment Where
Life Thrives

Breakout Room 1

Goal 1: Good air quality and mobility in an environment of continued population growth and healthy economic structure.

Goal 2: Less reliance on single-occupant vehicles with fewer commute and non-work trips.

Goal 3: Efficient management of transportation facilities and system infrastructure using cost-effective system management and innovative demand-management techniques.

Breakout Room 2

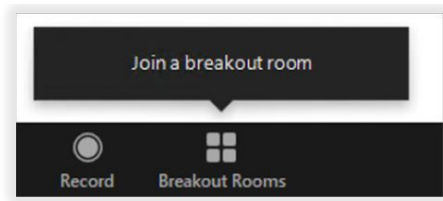
Goal 4: Minimal impact of existing land use patterns and future land use development air quality by addressing the relationship between land use, transportation, and air quality.

Goal 5: Energy efficiency through land use and transportation planning, the use of renewable resources and less polluting fuels, and the implementation of conservation measures including passive methods such as site orientation and tree planting.

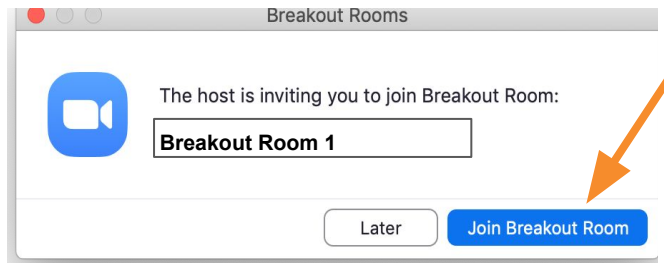
Goal 6: Citizen awareness of the linkages between personal behavior and air pollution, and participation in efforts to reduce air pollution.

Share your thoughts

Join a Zoom Breakout Room

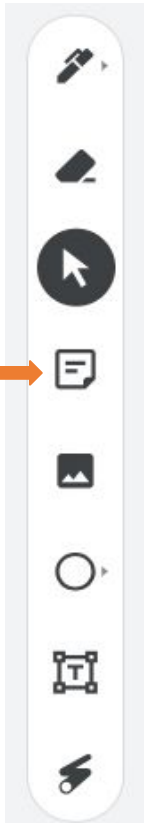


Click "Join Breakout Room" to start activity



Add your comments on Jamboard

- Use the "sticky note" function to add your thoughts



Break



Open Space



Background

What is open space?

Any parcel or area of land or water that is essentially unimproved and devoted to an open-space use. *CA Gov. Code Section 65560*

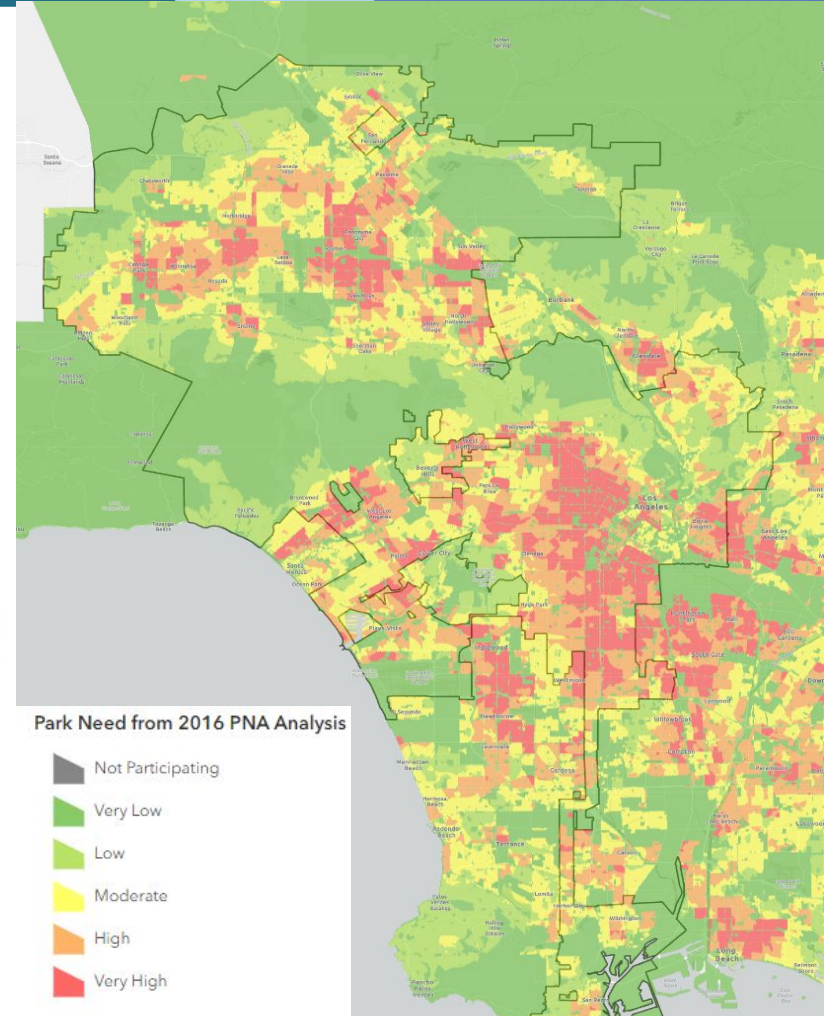
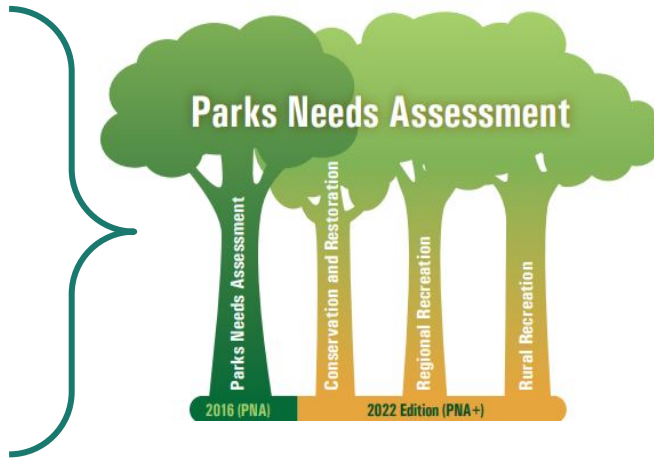
- Preservation of natural resources
- Managed production of resources
- Outdoor recreation
- Public health and safety
- Tribal resources
- Military purposes



Open Space in Los Angeles

2016 Park Needs Assessment (PNA) & 2022 PNA+

- Park Conditions
- Park Amenities
- Park Lands
- Park Access
- Park Pressure





Open Space Element

- Adopted in 1973
- Guide to identify, preserve, conserve and acquire open space
- Intersection with [Conservation Element](#) & [Health Element](#)
- New state requirements (SB 1425)

Open Space in the Health Element



Park Funding and Allocation



Expand Parks



Los Angeles River



Park Quality and Recreation Programs



Park Safety



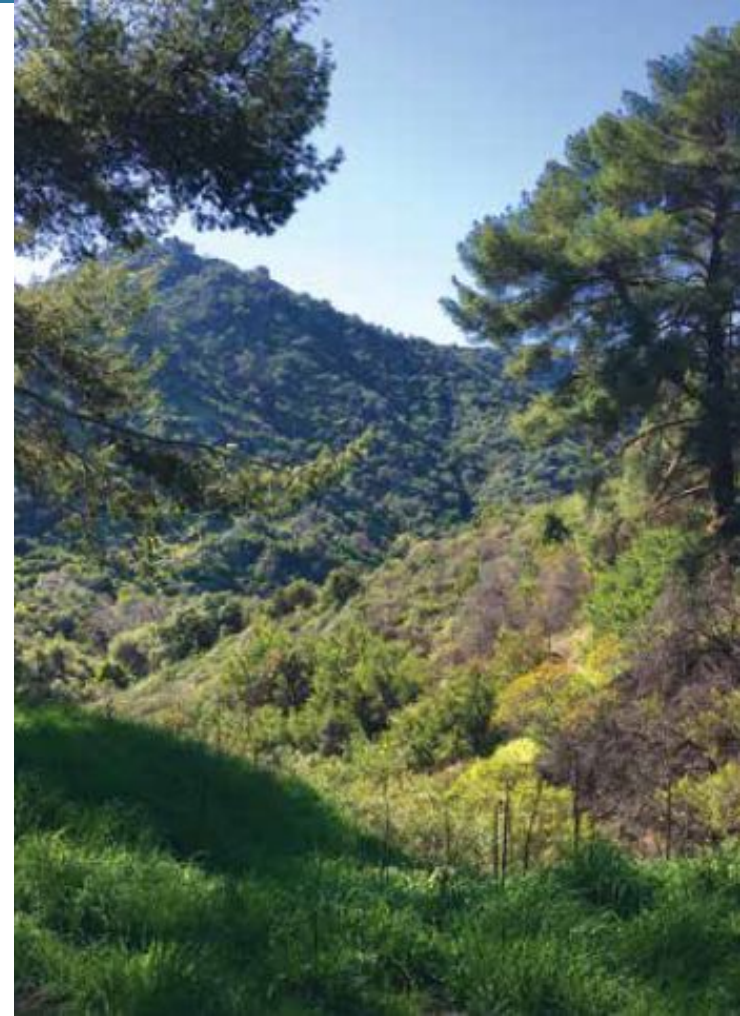
Local Partnerships



Water Recreation



Active Spaces



Open Space Element - Existing Goals

Health Element Goal 3:
Bountiful Parks and Open Spaces

Breakout Room 1

Goal 1: To insure the preservation and conservation of sufficient open space to serve the recreational, environmental, health and safety needs of the City.

Goal 2: To conserve unique natural features, scenic areas, cultural and appropriate historical monuments for the benefit and enjoyment of the public.

Goal 3: To provide an open space system which provides identity, form and a visual framework to the City.

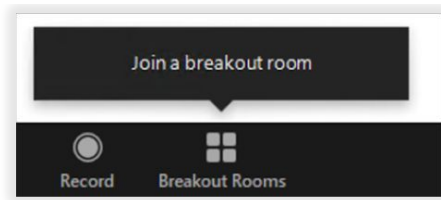
Breakout Room 2

Goal 4: To conserve and / or preserve those open space areas containing the City's environmental resources including air and water.

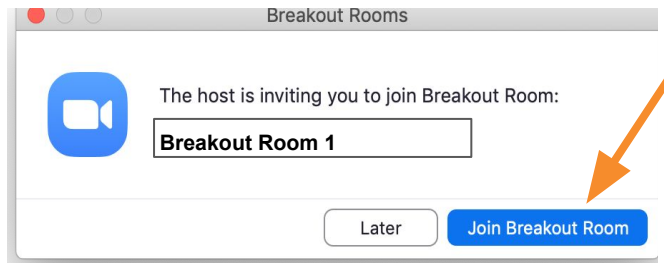
Goal 5: To provide access, where appropriate, to open space lands.

Share your thoughts

Join a Zoom Breakout Room

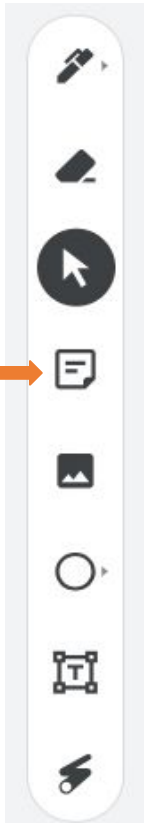


Click "Join Breakout Room" to start activity



Add your comments on Jamboard

- Use the "sticky note" function to add your thoughts



Health



Background

Health and Land Use

- Physical and social determinants of health have roots in structural inequity
- Where a person lives influences their health outcomes



Health Atlas

For the City of Los Angeles

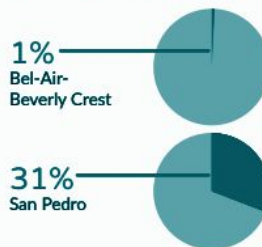
2021

Health in Los Angeles

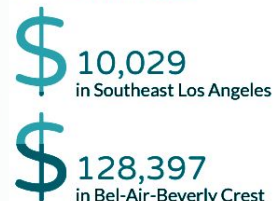
Health Indicators

- Social
- Economic
- Education
- Health
- Land Use
- Transportation
- Food System
- Crime
- Housing
- Environment

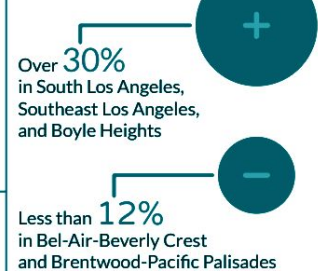
Population within 500 feet of a Truck Route



Per Capita Income



Childhood Obesity



Adults with High School Degree



Access to Park Space



Percent of Population Living in Extreme Poverty



of the City's extremely poor live in 4 areas: Central City, Westlake, Southeast Los Angeles and South Los Angeles

Traffic fatalities



Homicide Rate



Adults Who Eat Daily Recommended Five Servings of Fruits and Vegetables



Percentage of Adults with a Bachelor's Degree or Higher





Plan for a Healthy Los Angeles

A Health, Wellness, and Equity Element of the General Plan
November 2021

Health Element

- First adopted in 2015, last updated in 2021
- Connection between land use and health
- Meets recent state requirements (SB 1000)

Progress Report

- 78% of 91 programs are currently being implemented or under development.

Health Element Element - Existing Goals

Breakout Room 1

Goal 1: Los Angeles, a Leader in Health and Equity

Goal 2: A City Built for Health

Goal 3: Bountiful Parks and Open Spaces

Goal 4: Food that Nourishes the Body, Soul, and Environment

Breakout Room 2

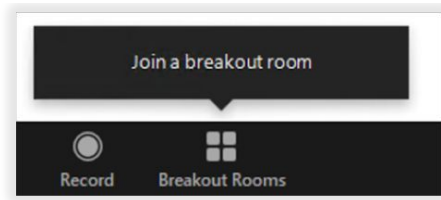
Goal 5: An Environment Where Life Thrives

Goal 6: Lifelong Opportunities for Learning and Prosperity

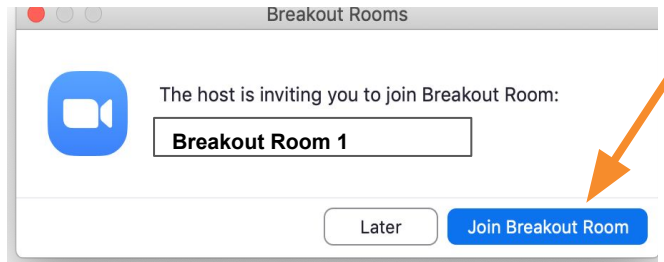
Goal 7: Safe and Just Neighborhoods

Share your thoughts

Join a Zoom Breakout Room

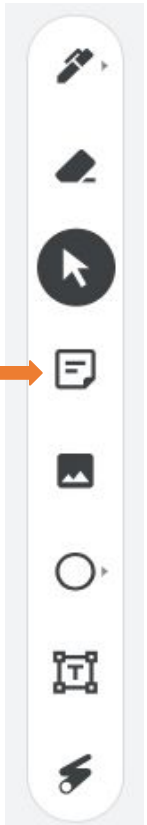


Click "Join Breakout Room" to start activity



Add your comments on Jamboard

- Use the "sticky note" function to add your thoughts



Closing and Next Steps

The background features a photograph of a modern building with large glass windows and a stone wall, situated in an urban environment. In the distance, a city skyline with several skyscrapers is visible under a clear sky. The entire image is overlaid with a semi-transparent blue filter. The text 'Closing and Next Steps' is centered in a large, white, sans-serif font. A short white horizontal line is positioned above the text.

Next Steps

Next Meeting

Date: Wednesday, February 7, 2023

Time: 3:00 pm to 5:00 pm

Topic: Implementation Programs



Working Group Materials:

<https://planning.lacity.org/plans-policies/community-plan-update/environmental-justice/environmental-justice-policy-program-0>

Thank You

Fabiola Inzunza
City Planner

Jonathan Ayon
City Planner

Gabriela Juarez
City Planner

Melissa Granados
Planning Assistant

Jesse Ramos
City Planning Associate

Myranda Arreola
Student Professional Worker

Marie Cobian
Senior City Planner

Jenna Monterrosa
Principal City Planner

planning.envjustice@lacity.org

<https://planning.lacity.org/plans-policies/environmental-justice>
